

VISO SYSTEMS

LabSpion

Assembly Manual

Revision: 14DEC024



Congratulations on purchasing your new Viso Systems product. Before using this product, please read the Safety Information.

This manual contains descriptions and troubleshooting necessary to install and operate your new Viso Systems product. Please review this manual thoroughly to ensure proper installation and operation.

For news, Q&A and support at Viso Systems, visit our website at www.visosystems.com

© 2020 Viso Systems ApS, Denmark

All rights reserved. No part of this manual may be reproduced, in any form or by any means, without permission in writing from Viso Systems ApS, Denmark. Information subject to change without notice. Viso Systems ApS and all affiliated companies disclaim liability for any injury, damage, direct or indirect loss, consequential or economic loss or any other loss occasioned by the use of, inability to use or reliance on the information contained in this manual.

Contents

1. Package content and weight	4
Main components/assemblies	4
Other components included in the package:	5
Assembly parts and cables	5
2. Package dimensions and weight	7
3. Leg assembly	Error! Bookmark not defined.
4. Stand assembly	8
5. Mount Base on Stand	9
6. Assemble C-Plane Gonio – Lamp Bracket	10
6.1. Attach Steel Pins to Tower	11
6.2. Tower + C-Plane Gonio	12
7. Place on floor	13
7.1. Level Base	13
7.2. Slide Tower onto the Base	14
8. Mount Sensor on Tripod	15
9. Cable connections	16
10. Software	18
10.1. First download	18
10.2. Software updates	18

1. Package content and weight

Main components/assemblies

Base – 28 kg



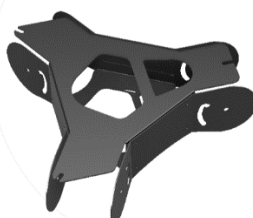
Tower – 13



Stand leg parts (3 pcs) – 12 kg



Stand center – 10 kg



C-Plane Head – 6 kg



REF-800 - 1 kg



Tripod – 5 kg



C-Plane Bracket – 3 kg



Cali T50 – 3 kg



Sensor – 8 Kg



Other components included in the package:

Lamp Holder E27 – 0,5 kg



Cross Hair Laser - 0,5 kg



Laser Distance Plate - 0,1 kg



Assembly parts and cables

1 x IEC 2m Cable



1 x USB 5m Cable



1 x RJ45 3m Cable



1 x RJ45 25m Cable



2 x Steel Rod with angle



1 x Steel Rod



4 x Caps for Steel Rod



3 x Handles for base



2 x Handles for Lamp Brackets



2 x Lamp Brackets



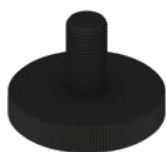
2 x Spacer for Lamp Brackets



8 x Spacer for C-Plane



3 x Screws for Base



8 x Screws for C-Plane



2 x Thumb screws for Laser distance Plate



Adaptors: E14, B22, GU10



2. Package dimensions and weight

Shipping Packages	Shipping Dimensions	Shipping Volume	Weight
1. Sensor + Cali	570 x 570 x 340 mm	0.110 m ³	10 kg
2. Base	520 x 520 x 220 mm	0.059 m ³	31 kg
3. Bracket + Tripod + Assembly Parts	1,490 x 250 x 250 mm	0.093 m ³	17 kg
4. Tower + C-plane Gonio	1,200 x 350 x 450 mm	0.189 m ³	23 kg
5. Stand center	570 x 570 x 340 mm	0.110 m ³	10 kg
5. Stand legs	920 x 430 x 270 mm	0.107 m ³	12 kg

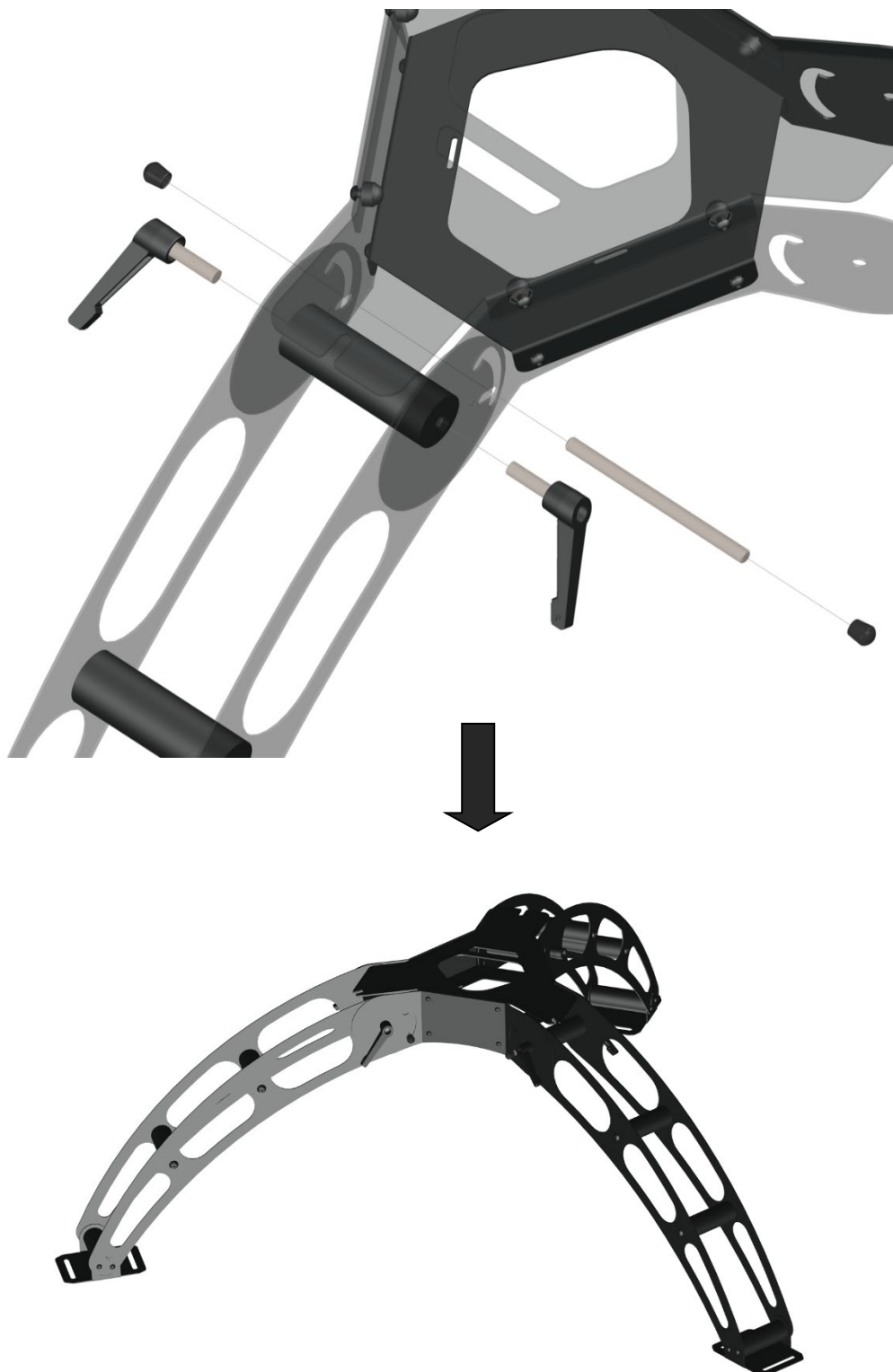
Total shipping weight: 103 kg.

Total shipping CBM: 0,669 m³

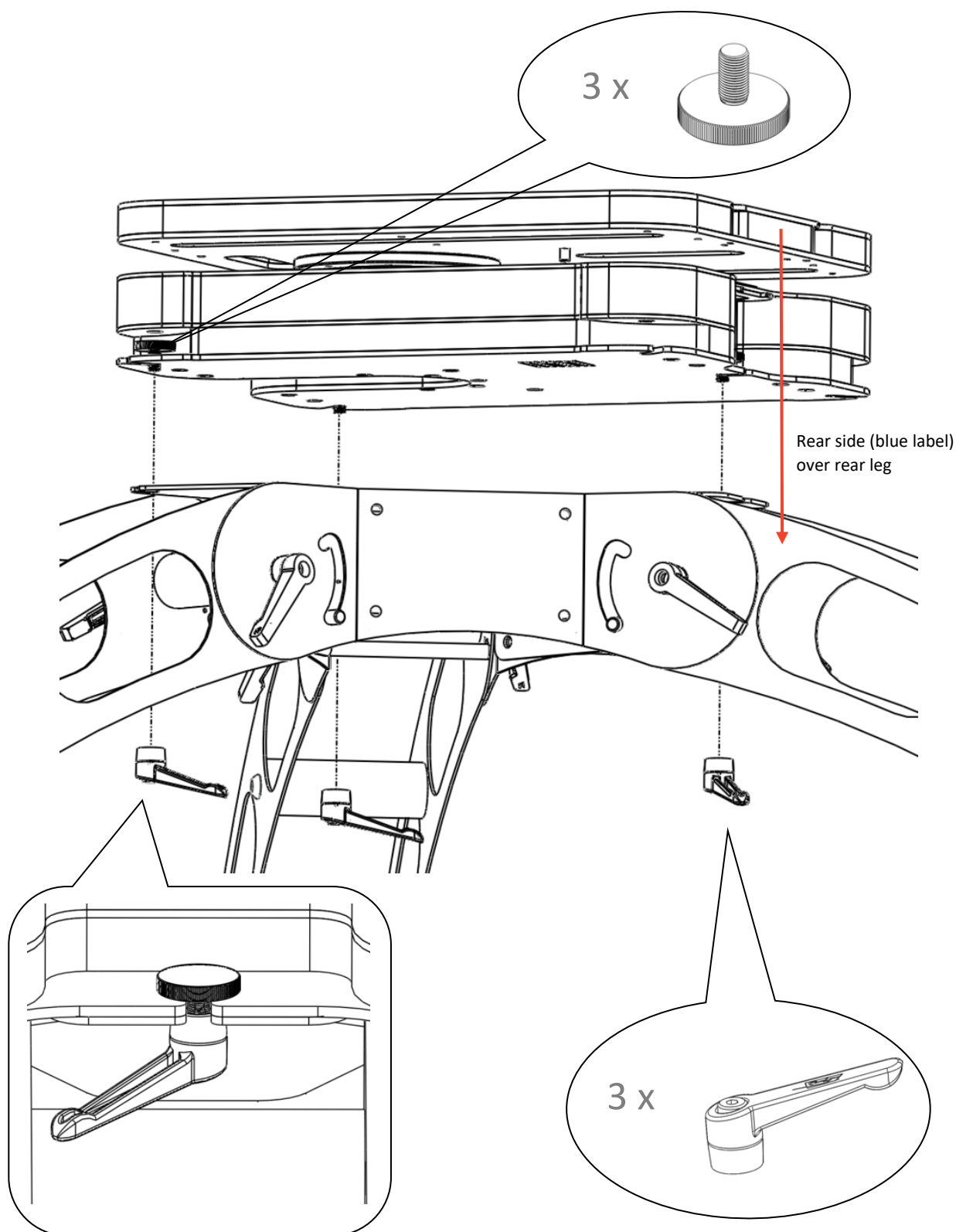
The shipment is done in a total of 6 packages.

3. Stand assembly

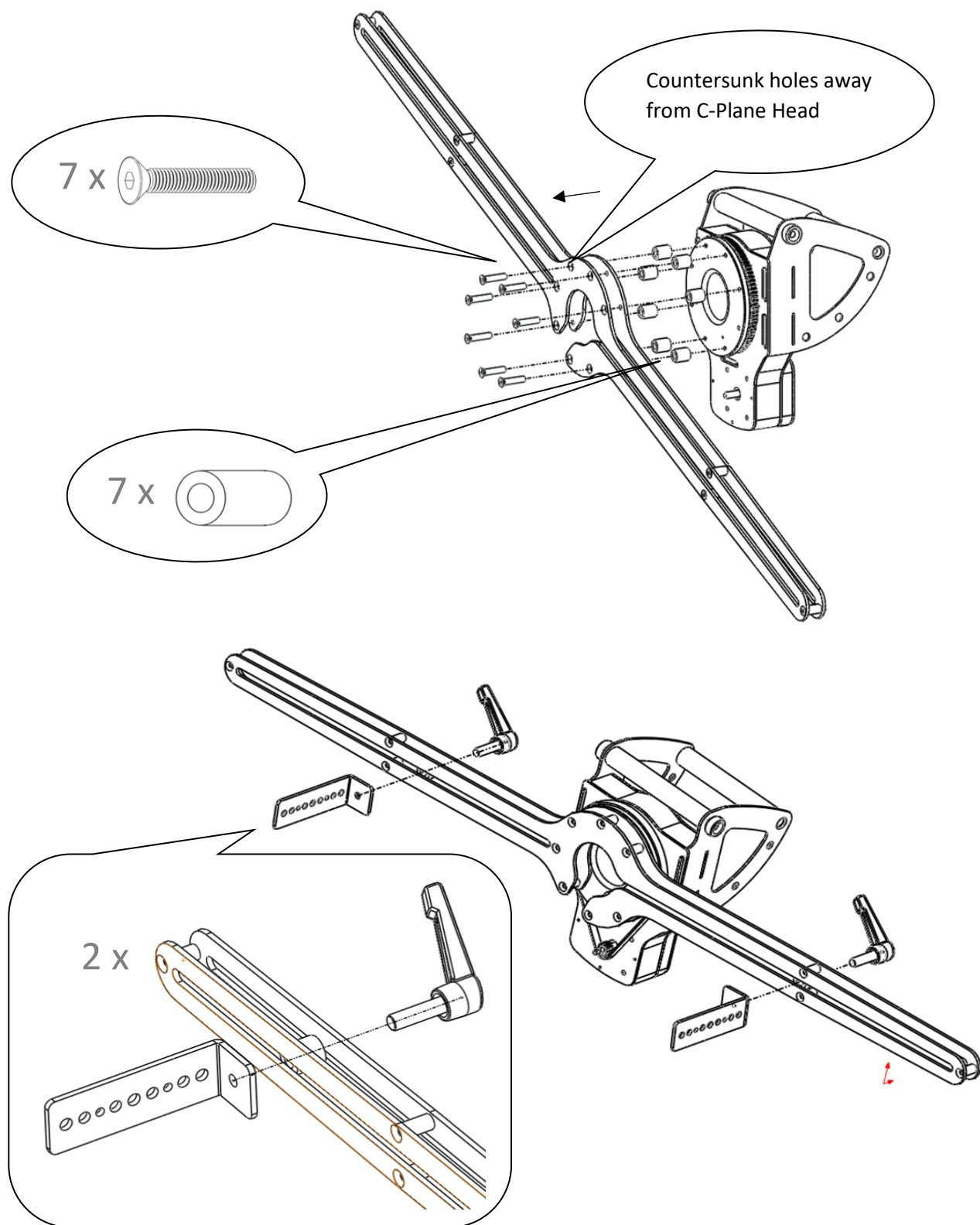
Assemble the stand by attaching the three legs one by one.



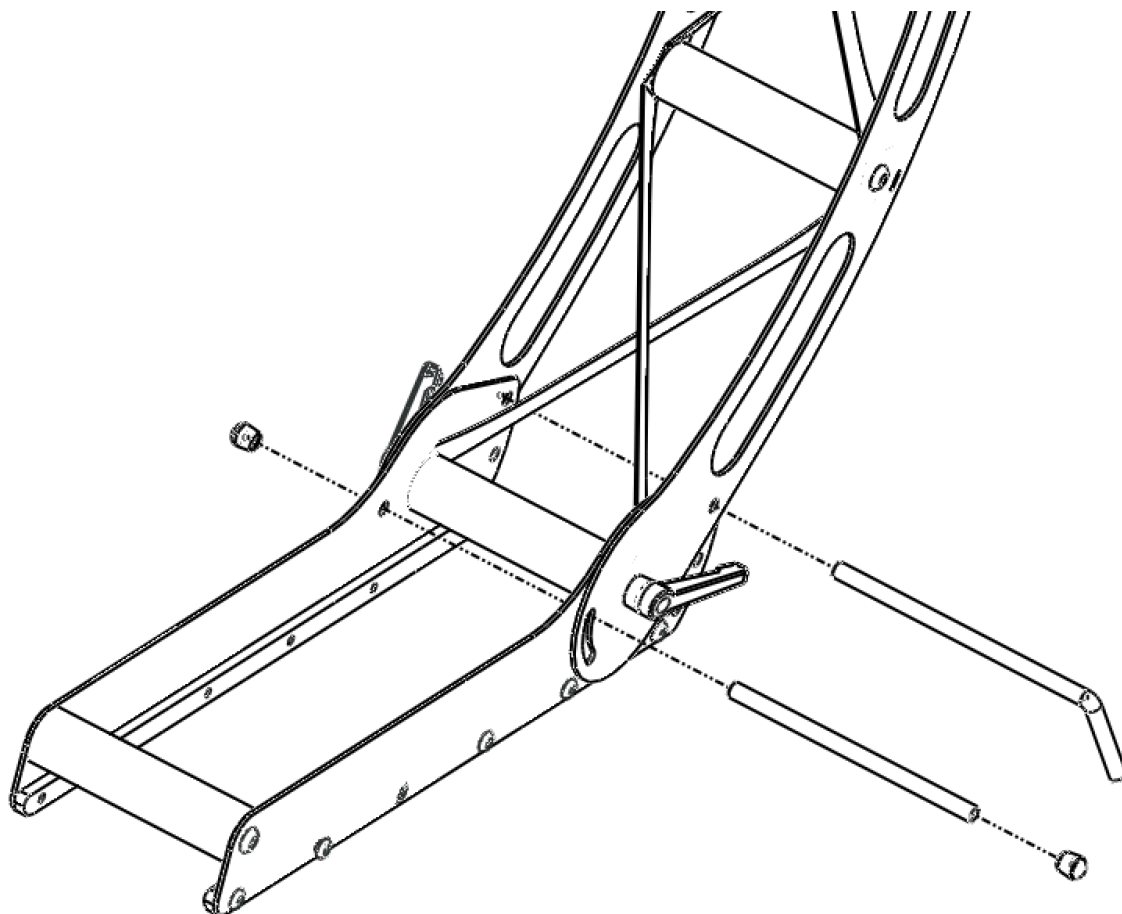
4. Mount Base on Stand



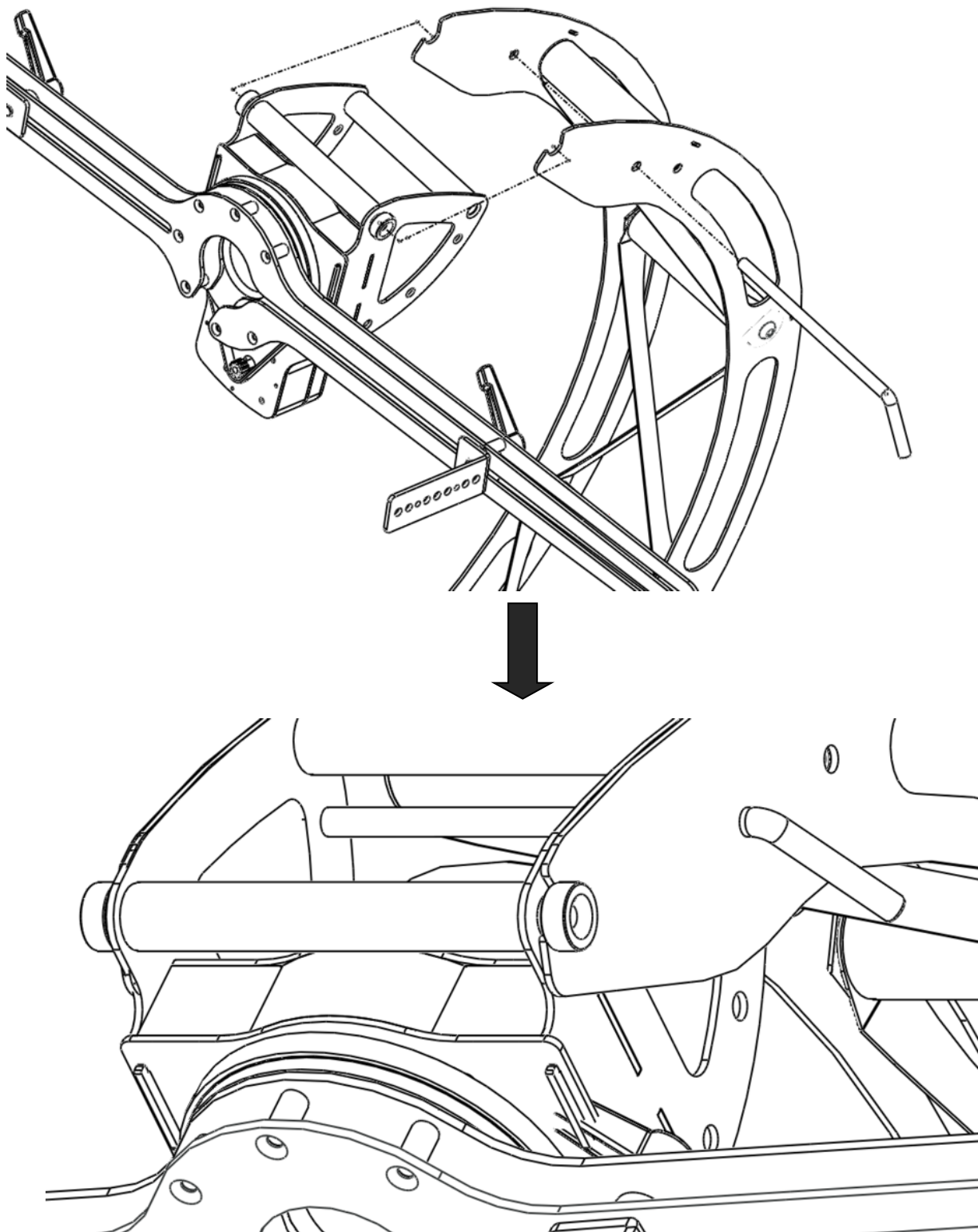
5. Assemble C-Plane Gonio – Lamp Bracket



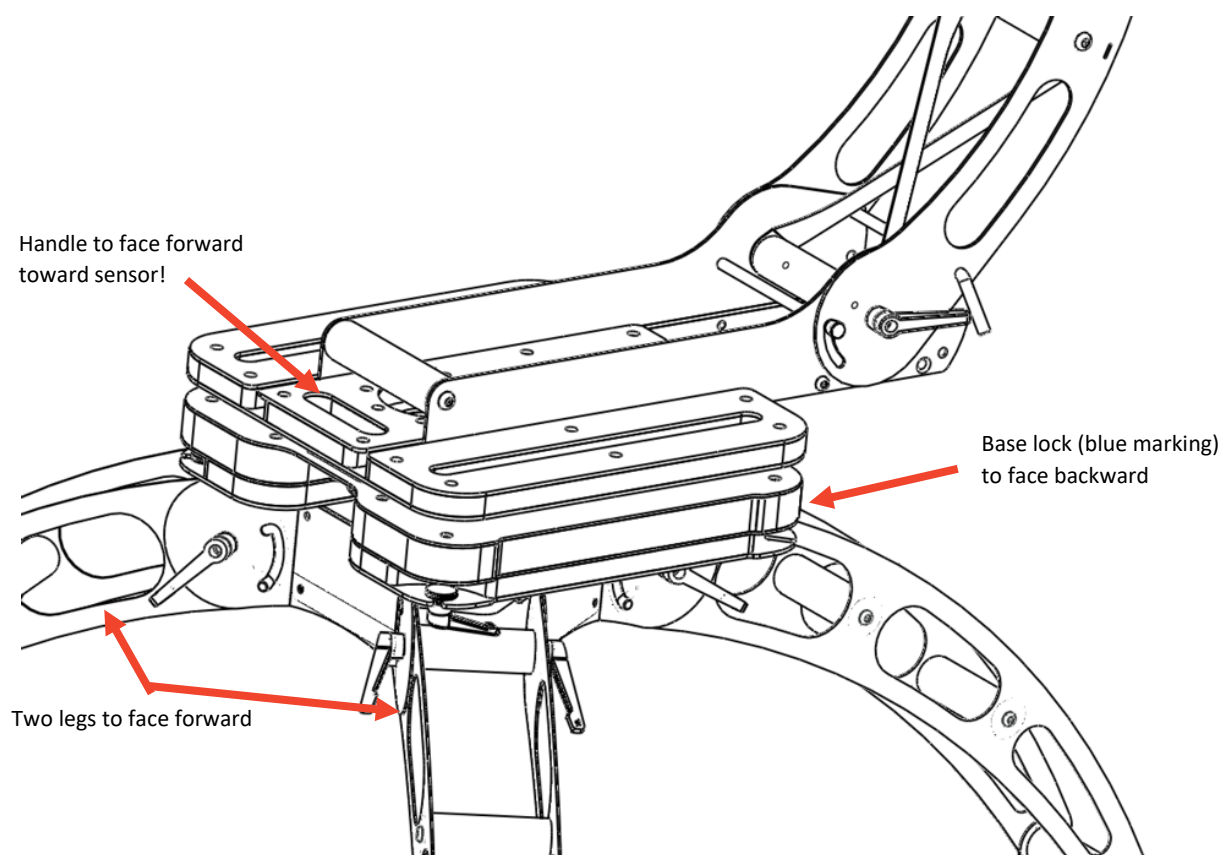
5.1. Attach Steel Pins to Tower



5.2. Tower + C-Plane Gonio



6.2. Slide Tower onto the Base



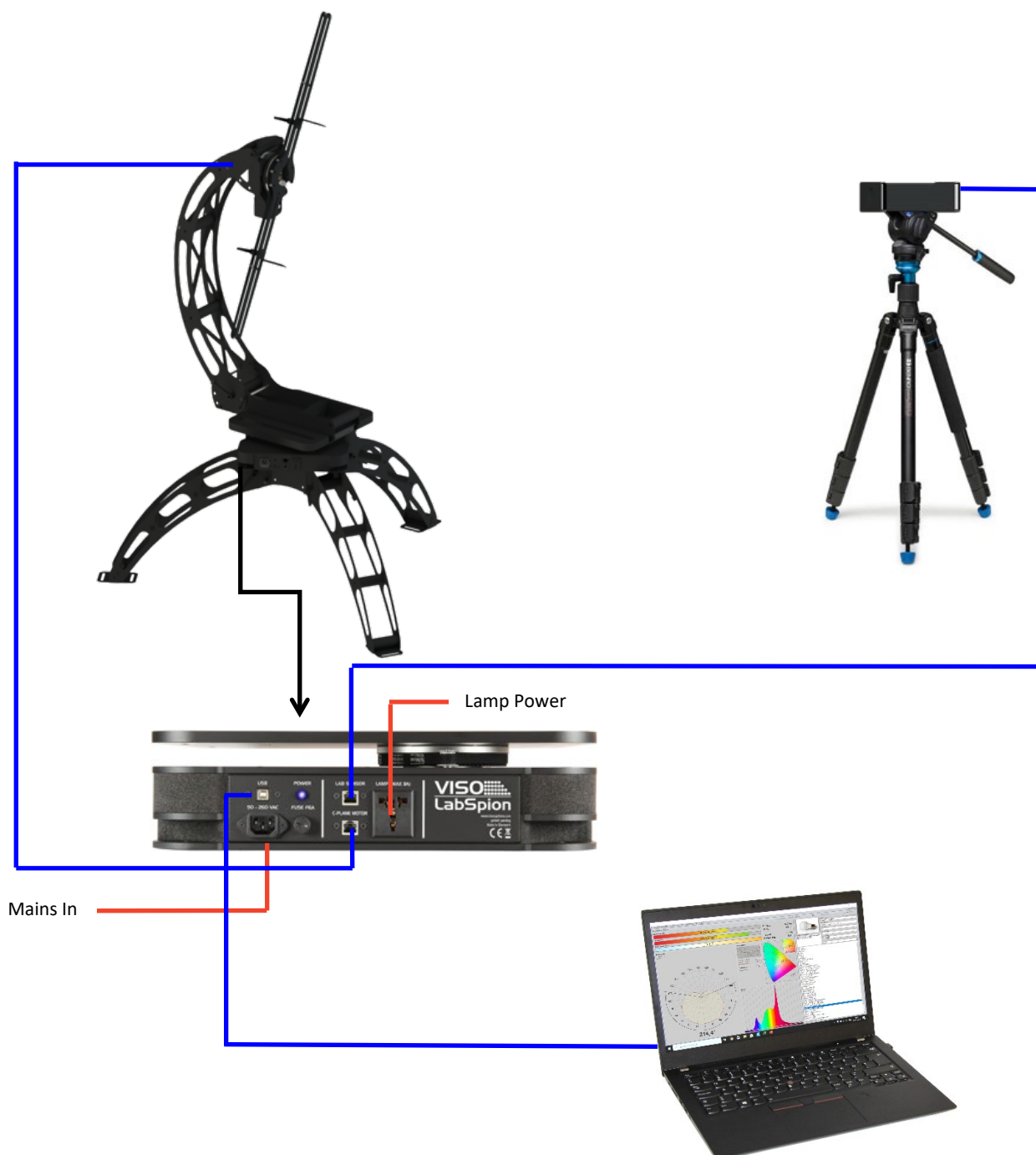
7. Mount Sensor on Tripod



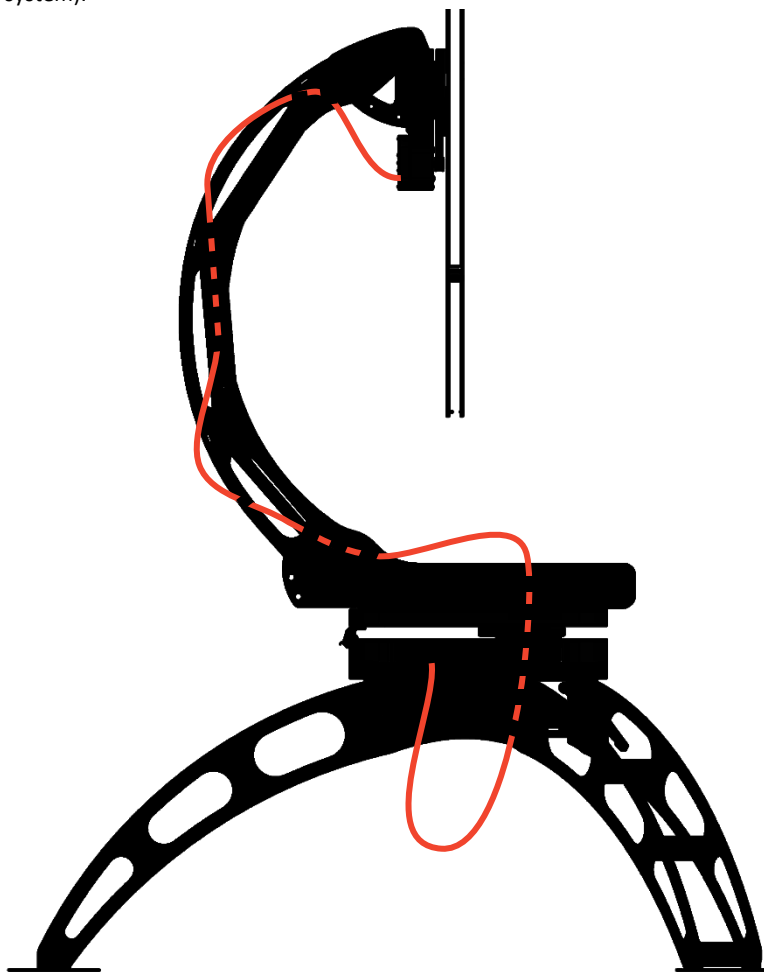
Slide on the sensor while activating the square blue button on the end. When in place, tighten the small upper-most handle to secure the sensor position. To turn the handle more than 180 degrees, pull out this small handle to disengage, and turn the handle only, before letting go again to engage with the screw.

8. Cable connections

Below is a connection diagram showing the cable configuration. Please refer to the user manual for further details.



The RJ45 cable connected the base and the c-plane motor must be mounted like this to avoid getting entangled. (Do likewise when connecting a light-source to the system).

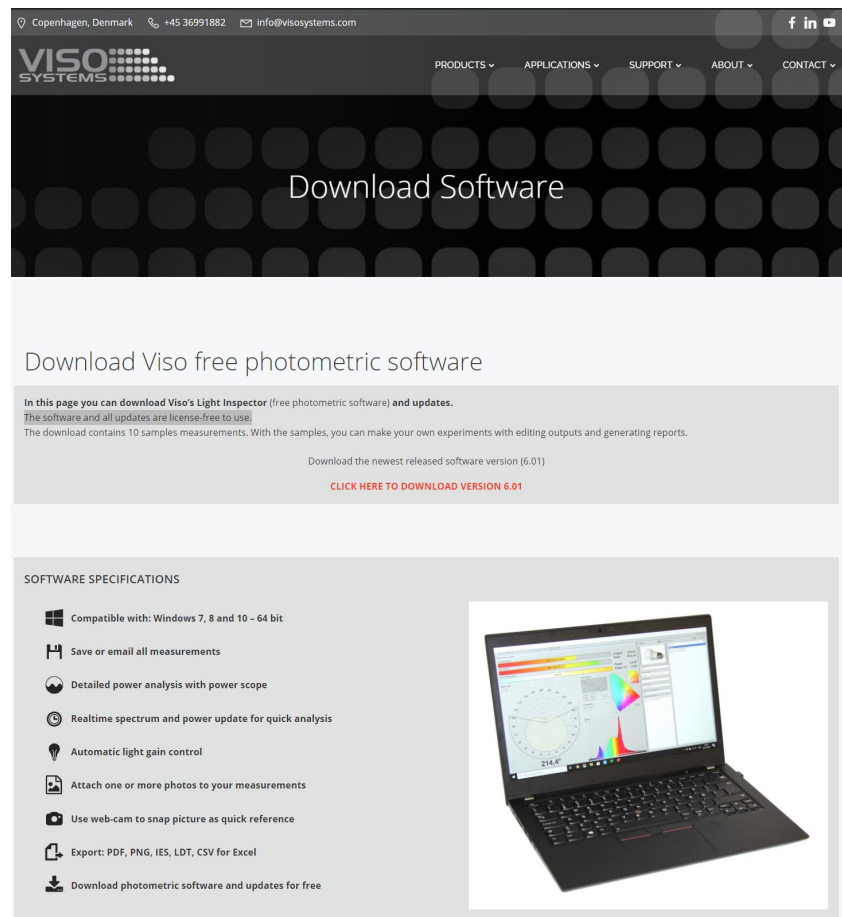


9. Software

9.1. First download

Please download the latest released software (Viso Light Inspector) version to your PC to run your new goniospectrometer solution. You will find the software here:

<https://www.visosystems.com/download-light-inspector/>



The full software and all updates are license-free to use. You may download the software to as many PC's as you wish.

9.2. Software updates

Viso Systems releases software updates 2-4 times per year. Update your software to gain access to system improvements and new features. All new software updates are backward compatible with existing Viso units. Your system will continue working also without updating.